

Compact hydraulic power packs type HC and HCW

These ready for connection hydraulic power packs are intended for intermittent operation (S 3) and used to supply pressurized fluid to consumers with low fluid demand, such as for jigs or machine tools for general machine building.

The power pack consists of a housing (tank) with integrated motor and pump. The housing of size 2, 3, and 4 features also a filling gauge, enabling visual control of the fluid level even during operation. The electrical connection takes place via an integrated terminal box.

Complete hydraulic control systems can be created by directly mounting various combinations of connection blocks and valve banks to the

hydraulic power pack.

Float switch as well as temperature switch are available as option for the optimal supervision.



Nomenclature: Radial piston pump with integrated electric motor (3- and 1-phase version)

Design: Oil immersed hydraulic power pack for intermittent service (S 3-service)

P_{max}: Radial piston pump
700 bar
Gear pump
180 bar

Q_{max}: Radial piston pump
approx. 20.1 lpm
(V_g = 7.2 cm³/rev)
Gear pump
approx. 20.4 lpm
(V_g = 7.9 cm³/rev)

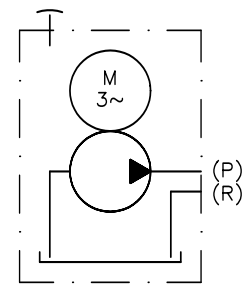
V_{usable max}: 8 l

Basic types and general parameters

Basic type and size Parameter: Delivery flow Q_{pu} (lpm), approximate reference value and max. pressure p_{max} (bar) ¹⁾

Symbol

Basic type and size	Q _{pu}	0,2	0,31	0,45	0,61	0,83	1,05				
HC 14	Q _{pu}	0,2	0,31	0,45	0,61	0,83	1,05				
	p _{max}	700	650	450	315	240	160				
HC 12	Q _{pu}	0,4	0,65	0,94	1,28	1,7	2,15				
	p _{max}	600	380	260	200	150	120				
HC 24	Q _{pu}	0,27	0,42	0,64	0,81	1,1	1,35	1,39	1,77	2,27	
	p _{max}	700	700	700	515	400	300	300	235	185	
HC 22(26)	Q _{pu}	0,52	0,82	1,17	1,58	2,06	2,61	2,68	3,41	4,41	
	p _{max}	700	700	550	400	300	240	240	180	140	
HC 34	Q _{pu}	0,9	1,25	1,5	2,5	3,6	4,3	5,1	5,6	6,5	
	p _{max}	700	700	600	400	300	250	210	180	150	
HC 32	Q _{pu}	1,75	2,45	3,0	4,9	7,1	8,5	10,2	11,1	12,9	
	p _{max}	700	550	400	250	160	120	100	80	65	
HC 44(48)	Q _{pu}	0,9	1,25	1,5	2,5	3,6	4,3	5,1	5,6	6,5	
	p _{max}	700	700	700	500	400	300	250	220	200	
HC 42(46)	Q _{pu}	1,75	2,45	3,0	4,9	7,1	8,5	10,2	11,1	12,9	
	p _{max}	700	700	700	450	310	260	230	200	180	



- ¹⁾ Q_{pu} applies for mains 50 Hz, Q ~ 1.2 x Q_{pu} for mains 60 Hz
- ²⁾ The actual power input depends on the respective operation pressure and can be up to 1.5 x P_N.
- ³⁾ Also suitable for mains 3 ~ 460 or 265V √Δ 60 Hz

Additional parameter

Basic type and size	Rev. rating n _N (rpm)	P _N (kW) ²⁾	V _{usable} (l)	Basic type and size	Rev. rating n _N (rpm)	P _N (kW) ²⁾	V _{usable} (l)	Nom. voltage
HC 14	1380	0.18	0.5	HC 34	1410	1.1	3.5	3 ~ 400V √ 50 Hz ³⁾
HC 12	2860	0.25	0.5	HC 32	2850	1.5	3.5	3 ~ 230V Δ 50 Hz ³⁾
HC 24	1390	0.55	1.5	HC 44(48)	1405	2.2(3)	8	3 ~ 500V √ 50 Hz
HC 22(26)	2880	0.55(1.1)	1.5	HC 42(46)	2870	2.2(3)	8	

Additional versions

- Hydraulic power pack with AC-motor (e.g. 1 ~ 230V (50 Hz), 30 ... 50% reduced performance depending on size (type HCW..))
- Design for level installation (reduced height) (type HC..L)
- Hydraulic power pack with DC-motor type HCG
- Version with gear pump
- Design with fluid level gauge
- Completion with connection block and valve banks (see also "Additional information")
- Version as dual stage pump

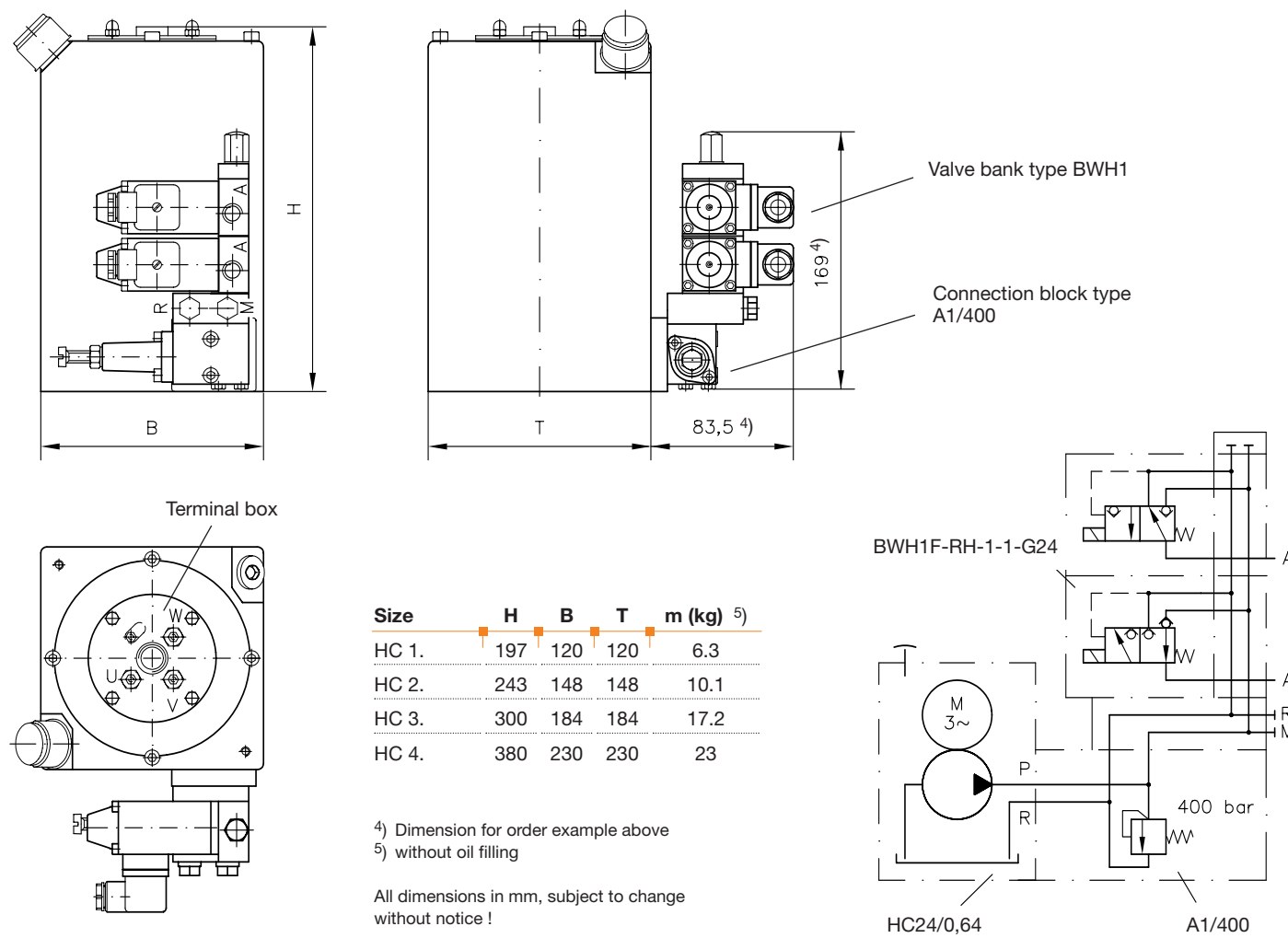
Order example

HC 24/0,64 - A1/400 - BWH1F - R1 H - 1 - 1 - G24 (3 ~ 400V 50 Hz)

Hydraulic power pack type HC, size 24, pump delivery flow approx. 0.64 lpm, with connection block type A and pressure limiting valve (400 bar) and directly mounted valve bank type BWH1

Dimensions

Dimensional drawing and symbol acc. to the order example.



Additional information

- Compact hydraulic power packs type HC D 7900
 - type HCG D 7900 G
 - type KA D 8010
 - Connection blocks type A D 6905 A/1
 - type B D 6905 B
 - type C D 6905 C
 - Directly mountable valve banks type VB D 7302
 - type BWH(N) D 7470 B/1
 - type BVZP D 7785 B
 - Directly mountable valve banks type SWR, SWS D 7450, D 7451, D 7951
 - type BA D 7788
 - see also "Turn-key solutions from our modular system"
 - see also section "Devices for special applications" (Hydraulics for clamping, Devices for up to 700 bar)
- For section and page of the additionally listed devices, see type index